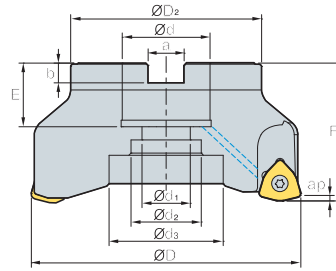


# HRMDC(M)13



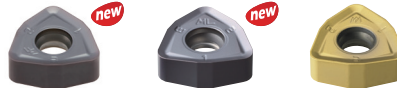
AA  
14°  
• AR: -7°  
• RR: -12°~ -4°

(mm)

Designation	ØD	ØD <sub>2</sub>	Ød	Ød <sub>1</sub>	Ød <sub>2</sub>	Ød <sub>3</sub>	a	b	E	F	ap	kg	Bolt		
HRMDCM	13050HR-3	3	50	42	22	11	17	-	10.4	6.3	21	40	2	0.3	SB1025
	13050HR-4	4	50	42	22	11	17	-	10.4	6.3	21	40	2	0.3	
	13063HR-4	4	63	49	22	11	18	-	10.4	6.3	21	40	2	0.5	SB1025
	13063HR-5	5	63	49	22	11	18	-	10.4	6.3	21	40	2	0.5	
	13080HR-5	5	80	57	27	14	20	-	12.4	7	23	50	2	1	SB1230
	13080HR-6	6	80	57	27	14	20	-	12.4	7	23	50	2	1	
	13100HR-6	6	100	67	32	18	26	-	14.4	8	25	50	2	1.6	SB1630
	13100HR-7	7	100	67	32	18	26	-	14.4	8	25	50	2	1.6	
13125HR-7	7	125	87	40	22	32	52	16.4	9	29	63	2	3.2	SB2040 MBA-M20	
13125HR-8	8	125	87	40	22	32	52	16.4	9	29	63	2	3.2		
HRMDC	13080HR-5	5	80	57	25.4	14	20	-	9.5	6	24	50	2	1	SB1230
	13080HR-6	6	80	57	25.4	14	20	-	9.5	6	24	50	2	1	
	13080HR-31.75-5	5	80	67	31.75	18	26	-	12.7	8	32	63	2	1.4	SB1630
	13080HR-31.75-6	6	80	67	31.75	18	26	-	12.7	8	32	63	2	1.4	
	13100HR-6	6	100	67	31.75	18	26	-	12.7	8	32	63	2	2.1	SB1630
	13100HR-7	7	100	67	31.75	18	26	-	12.7	8	32	63	2	2.1	
	13125HR-7	7	125	87	38.1	22	32	52	15.9	10	35	63	2	3.3	SB2040 MBA-M20
	13125HR-8	8	125	87	38.1	22	32	52	15.9	10	35	63	2	3.3	

## Available inserts

WNMX-MF      WNMX-ML      WNMX-MM



Designation	Cermet		Coated										Uncoated			page			
	CN2000	CN30	NCM325	NC5330	NCM535	NCM545	PC2505	PC2510	PC3600	PC3700	PC6510	PC9530	PC9540	PC5300	PC5400		ST30A	G10	H01
WNMX 130520ZNN-MF									●					●	●				E28
130520ZNN-ML														●	●				
130520ZNN-MM							●	●	●	●		●	●	●	●				

## Available arbors

Designation	NC arbors	
HRMDCM	13050HR-□	BT□□-FMC22-□□
		SK□□-FMC22-□□
	13063HR-□	BT□□-FMC22-□□
	13080HR-□	SK□□-FMC27-□□
	13100HR-□	BT□□-FMC32-□□
		SK□□-FMC32-□□
HRMDC	13125HR-□	BT□□-FMC40-□□
		SK□□-FMC40-□□
	13080HR-□	BT□□-FMA25.4-□□
	13080HR-31.75-□	SK□□-FMA25.4-□□
	13100HR-□	BT□□-FMA31.75-□□
		SK□□-FMA31.75-□□
13125HR-□	BT□□-FMA38.1-□□	
	SK□□-FMA38.1-□□	

## Bolt

Fig. 1

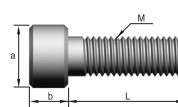
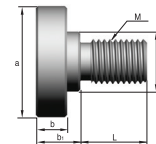


Fig. 2



Designation	Dimensions (mm)							Fig.
	M	a	b	b1	C	L	pitch	
SB1025	M10	16	10	-	-	25	1.5	1
SB1230	M12	18	12	-	-	30	1.75	1
SB1630	M16	24	16	-	-	30	2.0	1
SB2040	M20	30	20	-	-	40	2.5	1
MBA-M20	M20	50	14	20	27	30	2.5	2

## Parts

Specification	Screw	Wrench
Ø50~Ø125	FTKA0412B	TW15S

Available inserts E28      Available arbors and bolt E400~E402

